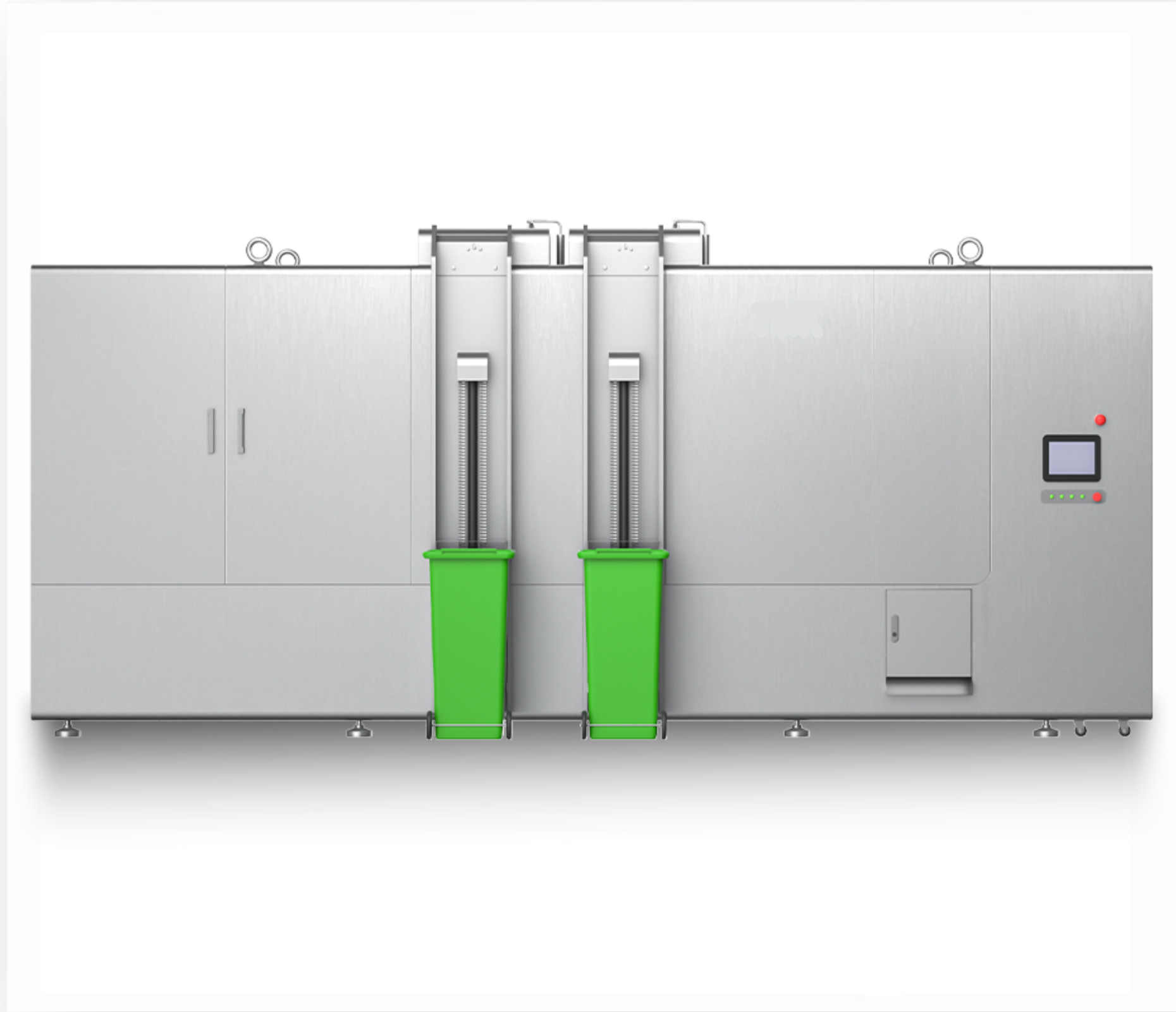


*“Your Ideal Composting Partner”*

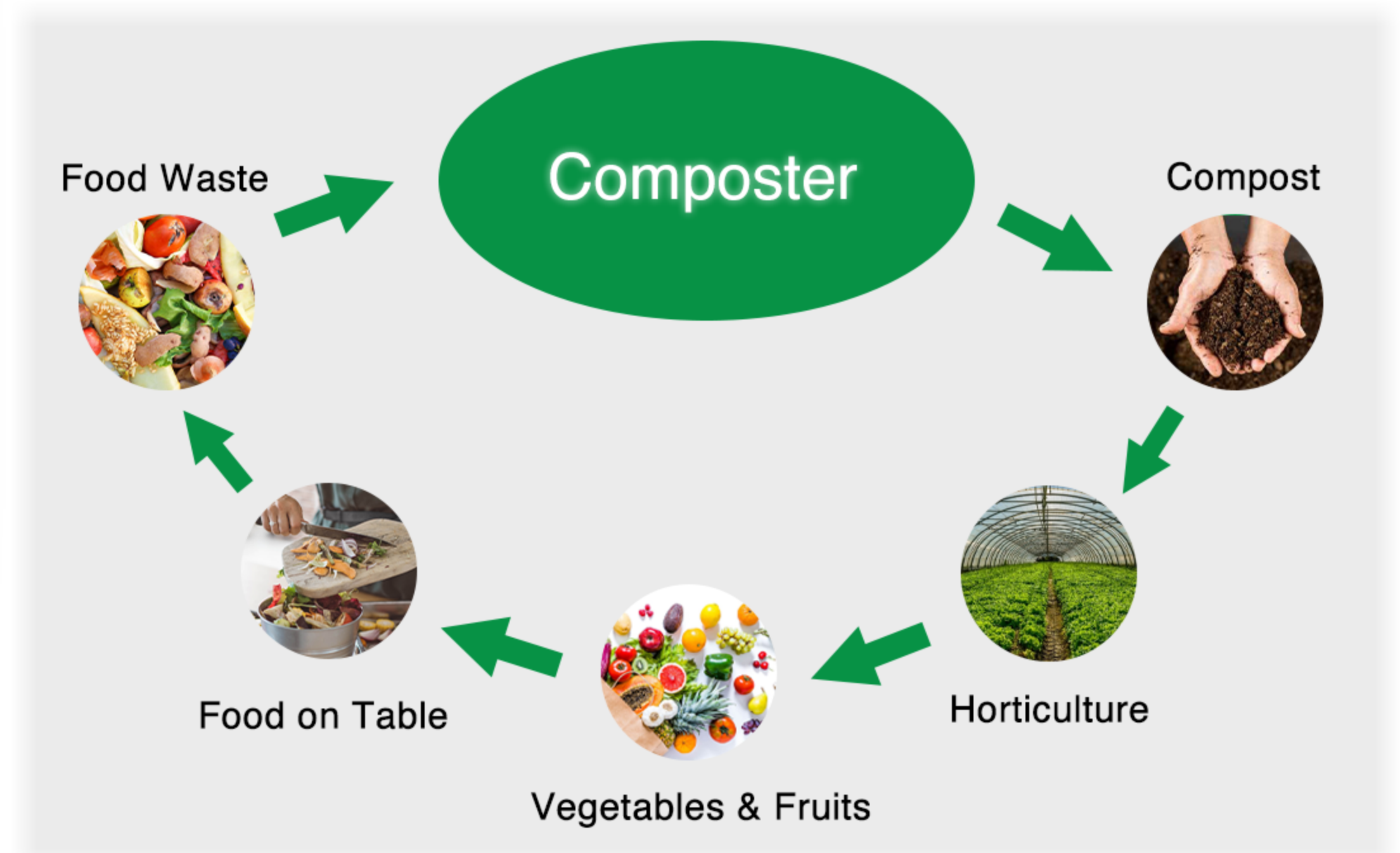
## Organic Waste Composter



### Turn your Food Waste, to Fertilizer

- Continuous and quick degrading process by bacterium.
- Reduce waste volume up to 90%.
- Assure odorless and pest deterrent.
- Save disposal costs.

Sustainable and socially responsible!



## Features

**TMK-5000 Organic Waste Composting Machine** decomposes all types of food waste in an aerobic environment using controlled parameters such as temperatures, agitation, and airflow. The machine utilizing our proprietary microbes and heat, food waste is transformed into nutrient-rich soil in only 24 hours.

## Ease to Operate

- Simply open the lid and empty food waste into the machine.
- Once the lid is shut, microbes will immediately begin composting food waste.

## Benefits

- Accelerated continual process to convert food waste to compost.
- 90% MAX Reduction rate.
- Compost only needs to be removed every week.
- Energy efficient, with no wastewater discharge.

## Specifications

### Waste Input Capacity

5,000 kg/day  
1,800 tons/year

### Treatment Time

24 hours

### Average Wasteage Reduction

85%-90%

### Power Supply

Three Phase  
AC380V, 60Hz

### Max. Power Draw

25 kWatt

### Power Consumption Reference

Average 8000~9500kWh/month  
(Actual electricity consumption may vary depending on use)

### Heating Method

Electrical Heating

### Input Door

Manual top-loading door with magnetic sensors

### Off-Load Door

Manual front opening door with magnetic sensors

### Safety Features

Mixing Blade automatically stops when doors are detected to be open.  
Prominent Emergency Stop.

### Dimension

6,500 mm (W) x 2,300 mm (D) x 2,100 mm (H)  
Weight: 5,460kgs

### Machine Material

Stainless Steel 304

